**WARNING:**

Do not inflate this assembly when it is unrestricted. The assembly must be restricted by the suspension or other adequate structure. Do not inflate beyond 100 P.S.I. Improper use or over inflation may cause property damage or severe personal injury.

INSTALLATION INSTRUCTIONS

Congratulations - your new Sport-Rite Air Helper Springs are quality products capable of improving the handling and comfort of your vehicle. As with all products, proper installation is the key to obtaining all of the benefits your kit is capable of delivering. Please take a few minutes to read through the instructions to identify the components and learn where and how they are used. It is a good idea to start by comparing the parts in your kit with the parts list below.

The heart of the Sport-Rite kit is, of course, the air helper springs. Remember that the air helper springs must flex and expand during operation, so be sure that there is enough clearance to do so without rubbing against any other part of the vehicle.

Be sure to take all applicable safety precautions during the installation of the kit. The instructions listed in this brochure and the illustrations all show the right, or passenger's side of the vehicle. To install the left side assembly simply follow the same procedures.

Your kit includes separate inflation valves and air lines for each air helper spring. This will allow you to level your vehicle from side to side as well as from front to back. If you would rather have a single valve inflation system, your dealer can supply the required "T" fitting.

IMPORTANT!

For your safety and to prevent possible damage to your vehicle, do not exceed the maximum load recommended by the vehicle manufacturer (GVWR). Although your Sport-Rite Air Helper Springs are rated at a maximum inflation pressure of 100 P.S.I., this pressure may allow you to carry too great a load on some vehicles. Check your vehicle owner's manual for maximum loads listed for your vehicle.

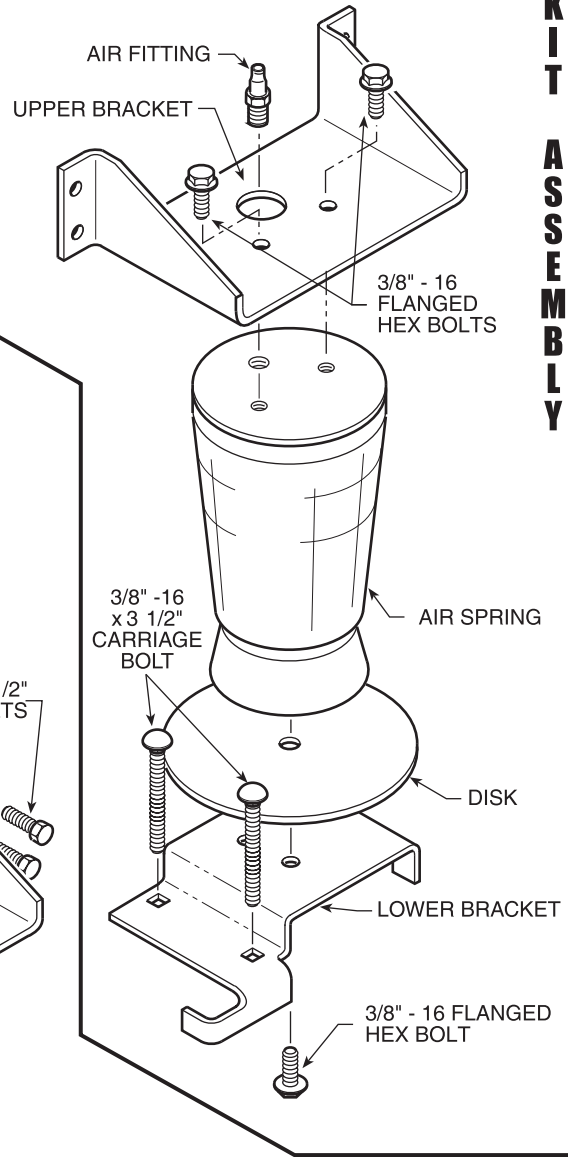
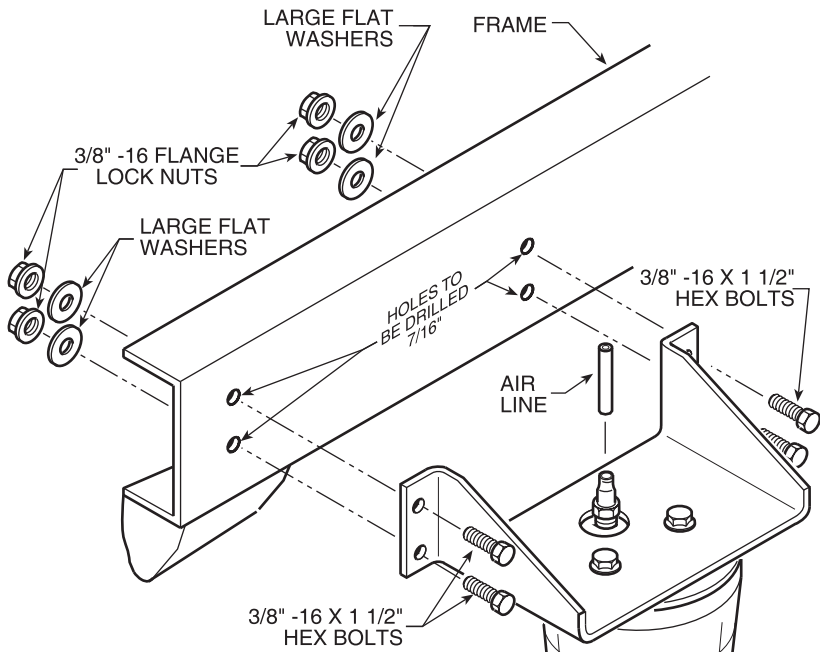
When inflating your Sport-Rite Air Helper Springs, add air pressure in small quantities, checking pressure frequently during inflation. The air spring requires much less air volume than a tire and, therefore, inflates much quicker.

PARTS LIST

AIR SPRINGS	9000	2	3/8"-16 X 3.5" CARRIAGE BOLTS	4
UPPER BRACKETS	5202	2	5/16" FLAT WASHERS	4
LOWER BRACKETS	5215	2	PUSH TO CONNECT	
DISK	5204	2	INFLATION VALVES	2
BRACKET STRAPS	5086	2	PUSH TO CONNECT	
AIR LINE TUBING		1	FITTINGS	2
3/8"-16 X 1-1/2" HEX BOLTS		8	NYLON TIES	6
3/8"-16 FLANGE LOCK NUTS		12	THERMAL SLEEVE	2
3/8"-16 X 3/4" FLANGED HEX BOLTS		6	CAUTION TAG	2
3/8" SPECIAL FLAT WASHERS		8		

NOTE: Both illustrations are of the left, or driver's side, of the vehicle. Reverse any orientations when assembling and installing the right, or passenger's, side of the vehicle.

KIT TO FRAME ASSEMBLY



ASSEMBLED AIR SPRING UNIT

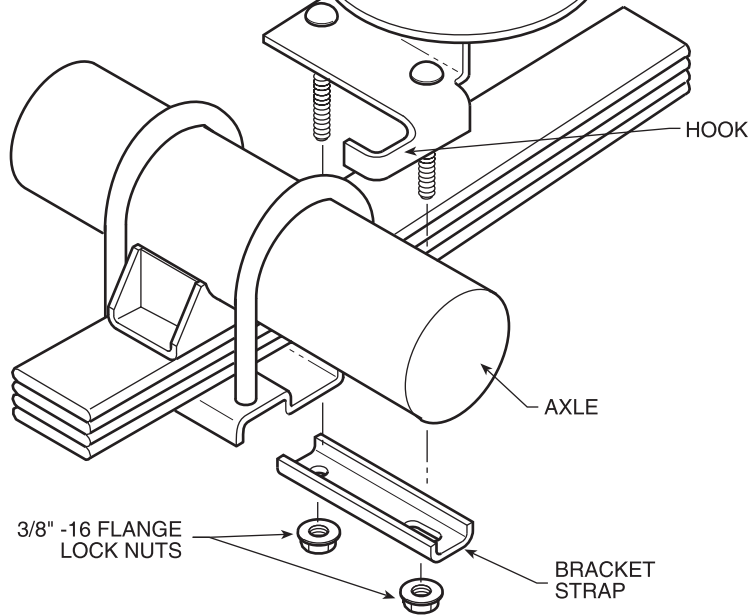


FIGURE "A"

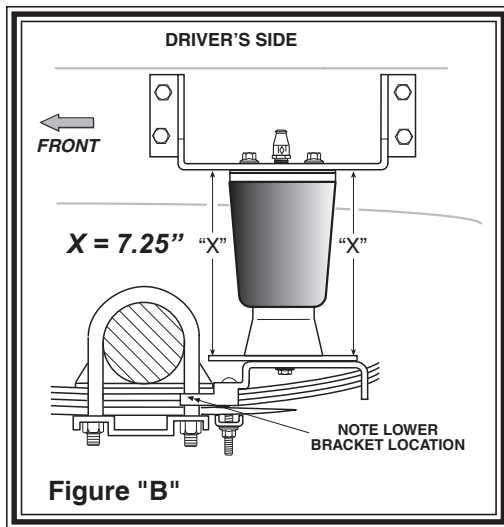


Figure "B"

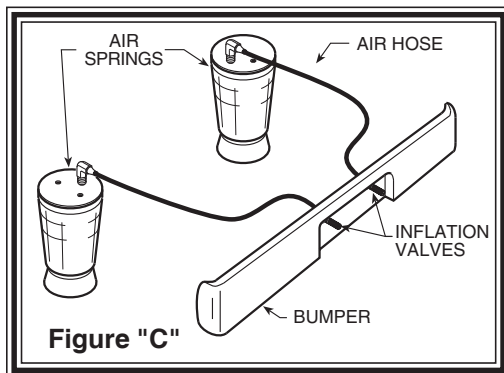


Figure "C"

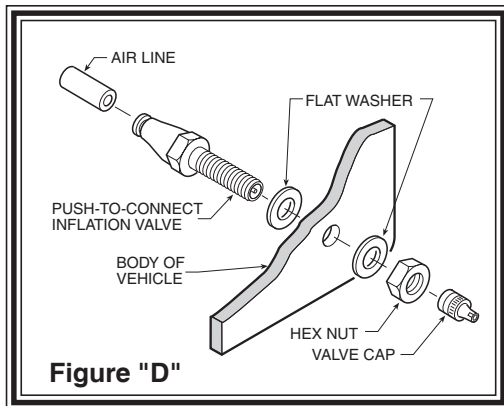


Figure "D"

NOTE:

Once the air helper springs are installed, it is recommended that the vehicle not be lifted by the frame, as over-extension may occur, resulting in damage to the air helper springs. However, should it become necessary to raise the vehicle by the frame, deflate both air helper springs completely.

STEP 1 - PREPARE THE VEHICLE

With the vehicle on a solid, level surface chock the front wheels. Raise the vehicle by the axle and remove the rear wheels. After the removal of the wheels lower the vehicle so the axle rests on jack stands rated for your vehicles weight. Remove the positive battery cable.

STEP 2 - PREASSEMBLE THE RIDE-RITE KIT

Select one air helper spring from your kit. Install the upper bracket by aligning the threaded holes on the air spring with the small holes on the upper bracket. Fasten the upper bracket to the air spring using the 3/8"-16 x 3/4" flanged hex bolt as shown in Figure "A". Install the air fitting as shown in Figure "A". Tighten the air fitting securely to engage the orange thread sealant. Insert the two 3/8"-16 x 4 1/2" carriage bolts into the lower bracket. Next, attach the lower bracket and disk to the air spring using the 3/8"-16 x 3/4" flanged hex bolt finger tight see Figure "A". Refer to Figure "A" & "B" for proper orientation of the lower bracket.

STEP 3 - ATTACH LOWER BRACKET TO LEAF SPRING

Place the assembly on the passenger's side on top of the leaf spring stack behind the axle (see Figure "A" and "B"). Attach the lower bracket to the leaf stack using the 3/8"-16 x 4 1/2" carriage bolts installed earlier and bracket strap as shown in Figure "A" and "B". Note that the hook on the lower bracket will capture the "U"-bolt. The bracket strap is used to clamp the lower bracket to the leaf stack (see Figure "A" and "B").

STEP 4 - MARK AND DRILL HOLES IN THE FRAME RAIL

Visually align the air spring so that it is vertically straight and the upper and lower brackets are parallel. (Note: The upper bracket should not exceed the top surface of the frame rail.) see Figure "A" and "B". Check the "X" dimension on both sides of the air spring, this dimension should be approximately 7.25" on both sides refer to Figure "B". With the air spring assembly in place, mark the upper left hole with a center punch. Drill the hole using a 7/16" drill bit. Before drilling the holes make sure all electrical, brake and fuel lines are cleared from the path of the drill. In order to prevent any damage to these lines it is recommended that a piece of wood be placed between the frame rail and the existing lines when drilling.

STEP 5 - ATTACHING THE UPPER BRACKET

Once the hole has been drilled attach the upper bracket using the 3/8"-16 x 1 1/2 inch hex bolt, large flat washer and the flanged hex nut to the frame rail (finger tight). This will allow you to adjust the location of the upper bracket. Once the positioning of the upper bracket is parallel with the lower bracket and the "X" dimensions are equal, drill the remaining three holes in the frame rail using the upper bracket as a template. Use the 3/8"-16 x 1 1/2 inch hex bolts, large flat washers and the flanged hex nuts to fasten the upper bracket to the frame rail refer to Figure "A". Tighten the air spring to the lower bracket using a 9/16" open end wrench.

STEP 6 - INSTALLATION OF THE PASSENGER'S SIDE ASSEMBLY

Follow steps 1-5 for assembly and installation of the passenger's side assembly. Note, reverse any orientations for the passenger side installation.

